



 **ITALIANA**<sup>®</sup>  
*f e r r a m e n t a*

Maori

SHELF  
SUPPORTS





# SYMBOLS AND FINISHES LEGEND

## SYMBOLS



= SHELF SAFELY LOCKED DURING TRANSPORTATION AND AT HOME



= ANTI-TURNOVERLOCKING SYSTEM



= NORMS / PATENTS



= PHILLIPS / POZIDRV



= WITH BUFFER



= PART NO.



= BLADE SLOT



= WITH MAGNET



= PCS. PER PACKAGE



= COMBI SLOT



= HEXAGONAL SOCKET



= NEWTON



= CAPACITY LOADING



= HEXALOBULAR SOCKET



= FRICTION



= WOOD / GLASS THICKNESS



= COUNTERSUNK HEAD



= AUTOMATIC



= HOLE DIAMETER



= PAN HEAD



= DROP DOWN



= DIAMETER



= FLANGE HEAD



= LENGTH



= FLAT HEAD



= STANDARD HINGE



= HEIGHT



= TRILOBULAR SCREW



= KIMANA HINGE



= RIGHT VERSION



= SELF-TAPPING SCREW



= FLAP HINGE



= LEFT VERSION



= EURO THREAD



= WITH SPRING



= SETTING CODE



= METRIC THREAD



= WITHOUT SPRING



= PCS. PER PAD



= PRE-INSERTED SCREW



= REVERSED SPRING



= CUT ON REQUEST



= PRE-INSERTED SCREW AND SPREADING BUSH



= SELF ADHESIVE



= WITH FLANGE

NOTE: Printing errors and omissions may exist despite our best efforts to ensure accuracy. We reserve the right to alter specifications without notice.

## MATERIALS

ZA = Zinc Alloy

ST = Steel

HSS = High Speed Steel

BR = Brass

ABS = Acrylonitrile Butadiene Styrene

ZAnk = Nickel-plated Zinc Alloy

STzk = Zinc-plated Steel

AL = Aluminium

WD = Wood

EVA = Ethylene Vinyl Acetate

EP = ENGINEERING PLASTIC

+ EP = other engineering plastic available on request

SR = SOFT RUBBER + SR = other soft rubber available on request

EPn = Natural Engineering Plastic

EPc = Clear Engineering Plastic

SRn = Natural Soft Rubber

EPw = White Engineering Plastic

EPg = Grey Engineering Plastic

SRw = White Soft Rubber

EPwg = Water Green Engineering Plastic

EPa = Anthracite Engineering Plastic

SRb = Black Soft Rubber



## FINISHES



+ OTHER FINISHES AVAILABLE ON REQUEST

| PART NO. | FINISHES             | PART NO. | FINISHES                 | PART NO. | FINISHES                     |
|----------|----------------------|----------|--------------------------|----------|------------------------------|
| 00       | Insignificant finish | IF       | Middle Grey              | RO       | Red                          |
| AA       | Natural              | IJ       | Light Grey               | UT       | T-Met 9007                   |
| AB       | White                | IL       | Grey 20                  | UZ       | T-Met                        |
| AE       | White 9010           | IN       | Grey met. 26             | WA       | Bronzed                      |
| EA       | Black                | JB       | Bright Aluminium         | WI       | Burnished                    |
| EC       | Matt Black           | JC       | Aluminium - Chrome       | XD       | Satin-finished Steel         |
| EE       | Anthracite           | JD       | Matt Aluminium           | YA       | Nickel-plated                |
| EW       | Grey 9007            | JE       | Satin-finished Aluminium | YB       | Bright Nickel-plated         |
| FU       | Gunmetal             | JF       | Aluminium - Brass        | YC       | Matt Nickel-plated           |
| FV       | Gunmetal V52         | JG       | Aluminium 5              | YD       | Satin-finished Nickel-plated |
| GR       | Raw                  | JL       | Aluminium FE 11          | YQ       | Black Nickel                 |
| HA       | Brass-Plated         | JM       | Aluminium RAL 9006       | Z9       | Black Zinc                   |
| HH       | Tropicalized         | KA       | Chrome                   | ZA       | Zinc alloy                   |
| HL       | Raw Brass            | KB       | Bright Chrome            | ZN       | Zinc-plated                  |
| HX       | Graphite             | KC       | Matt Chrome              | ZQ       | Bright Gold                  |
| IA       | Grey                 | LD       | Brown 8019               | ZY       | Titanium                     |
| IB       | Metallic Grey        | NN       | Metallic Beige           | ZZ       | Clear                        |



**MAORI - Step installation**



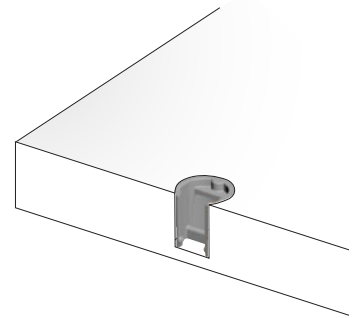
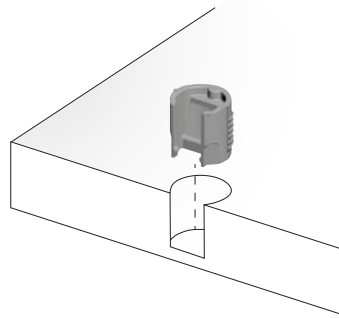
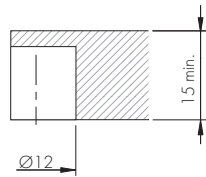
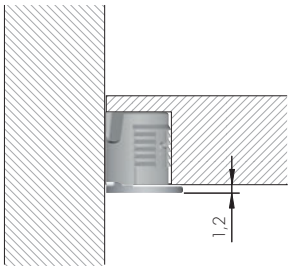
15 mm min.



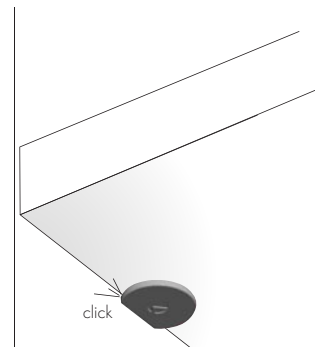
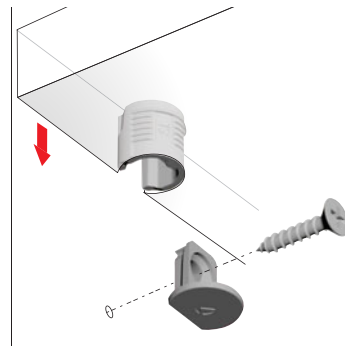
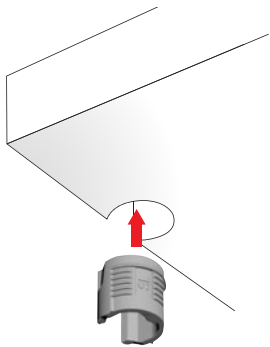
Certificates available on request.



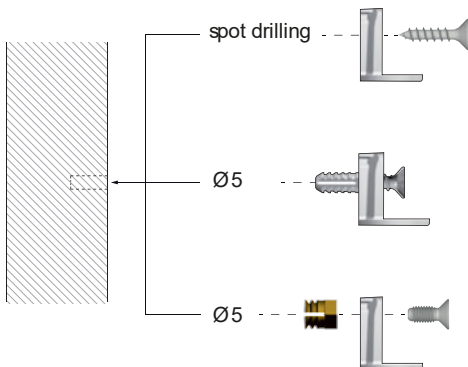
**SPECIFICATIONS**



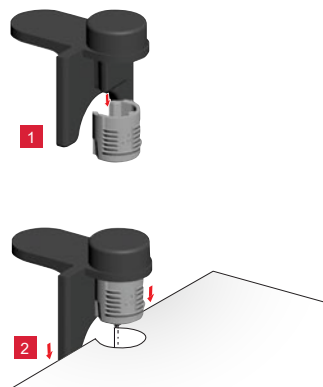
**INSTALLATION AND ASSEMBLING**



**FIXING OPTIONS FOR SIDE PANEL BRACKET**

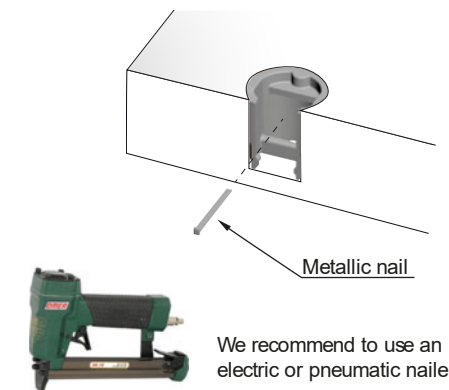


**TEMPLATE (for assembling see the related section)**



**OPTIONAL FIXING WITH NAILER:**

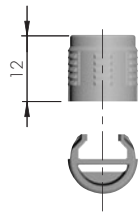
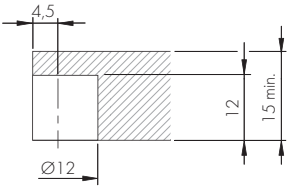
To achieve much more horizontal connection.






**MAORI**  15-16 mm

STEP INSTALLATION

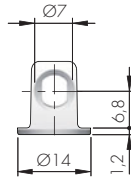
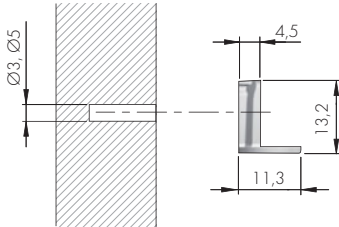



EP

 = 20.000 pcs.




11701140IL



 = Ø 3, Ø 5 mm

+ 

ZA

 = 5000 pcs.



11704010YA