

INSTEAD OF FOLLOWING  
A MODEL, WE CREATED ONE.



Wave is born, the minimal  
handle that combines grip  
and closure.

**WAVE**  
reshape the handle



Open, Close, Live

**AGB - Alban Giacomo Spa**  
is an Italian company specialized in  
locking systems for doors and windows.

Since 1947 AGB has never stopped  
believing and investing in the innovation  
with the belief that the best of technology  
gives life to an excellent product.

Thanks to its experience and its  
know-how, it has designed **Wave**,  
a design product which is unique  
in the market.

MADE IN ITALY



# WAVE

reshape the handle



Open, Close, Live



One day the wind said to the sea:

“I want to create a new wave from your water.  
I’ll make it as beautiful as you’ve never seen,  
I will give it bright colours, i will draw from  
its water the best qualities.  
I will chase it all over your expanse and there  
I will accompany it to the golden beach.”





**Wave** is coherence with the object in which is integrated:  
square within a square, plane on a plane.



# MINIMAL DESIGN: LINEAR, COPLANAR, ESSENTIAL



**Wave** revolutionizes the shape of the door handle.

Linear, coplanar, essential:

**Wave** enhances the design of the minimal door and widens the horizons of the interior designer. Design is no longer just a function as the standard lever is.

**Wave** preserves all functions of a traditional handle: opening and closing the door, ergonomically.

Even when the door is open, **Wave** has no protrusion, it is perfectly integrated with the door: the handle is no longer an obstacle for those who pass by.



## DESIGN INSPIRED BY THE SEA: WAVE MOVEMENT



**Wave** reveals the new movement designed to open the door, the movement of the water that breaks on the beach and recedes from the shore.

The **Wave** handle offers a secure and comfortable grip.



In that precise point where the sky and the sea meet and merge, the huge desire to look beyond the imaginable begins.

That's where **Wave** is born, the only handle that combines grip and closure.



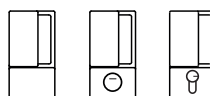




Wave is not just a handle but a complete locking system.



The handle design always remains coherent with the available possibilities of closing: without key, for bathroom with coplanar knob and with European profile cylinder.



## WAVE: THE HANDLE THAT COMBINES GRIP AND CLOSURE



**Wave** allows the end user to change in any time the locking device in an easy and fast way.

The sea is a collection of waves:  
the same sound, the same shape.

**Wave** is the first handle that  
offers the same shape for all  
the door types.

**Wave** is the first handle that creates a continuity of shape both for swinging and sliding doors, which have been always very different one from the other: **Wave** allows the transversality of the handle on all doors of a house!









## WAVE SOLUTION FOR SLIDING DOORS

The upper part hosts the grip. Unlike **Wave** for Polaris, the handle is fixed and allows to pull the door easily.

---



A light pressure on the notch reveals the handle which allows to lock and unlock the door.

---

In the lower part, **Wave** hosts the closure. The versions available are: bathroom, without key or European profile cylinder.


---





Scivola Tre Class with concealed pull out lever.





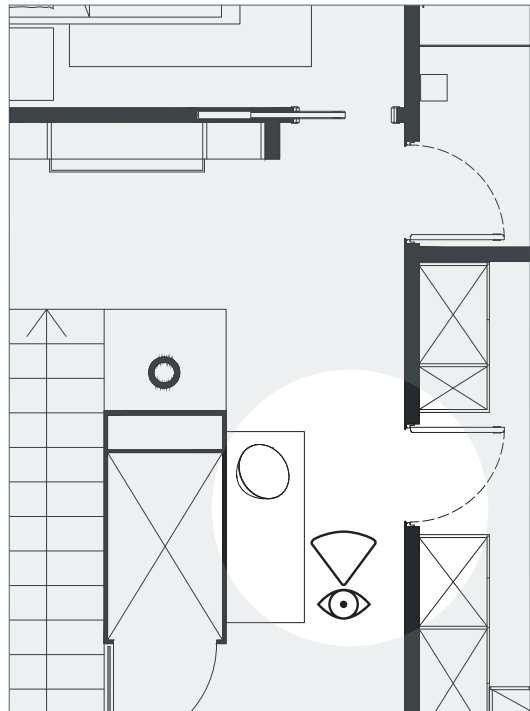
**Wave** is the result of a precise research that satisfies the most demanding requests.

The minimal design and its features allow to improve the spaces during the design procedure.

**Wave** means freedom to design on the wave of enthusiasm.

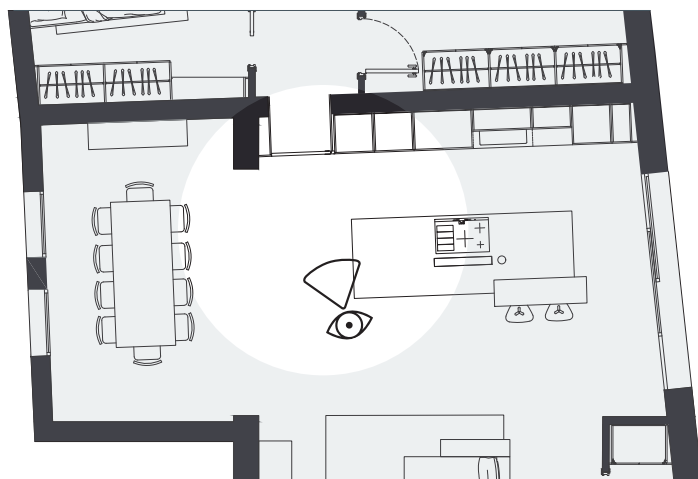


NO PROTRUSION:  
THE WALL, THE SASH  
AND THE HANDLE ARE  
IN THE SAME LEVEL



In hallways where there are many doors, the design impact of the standard protruding handle is even more evident.

**Wave** is minimal and fits perfectly with concealed frameless doors.

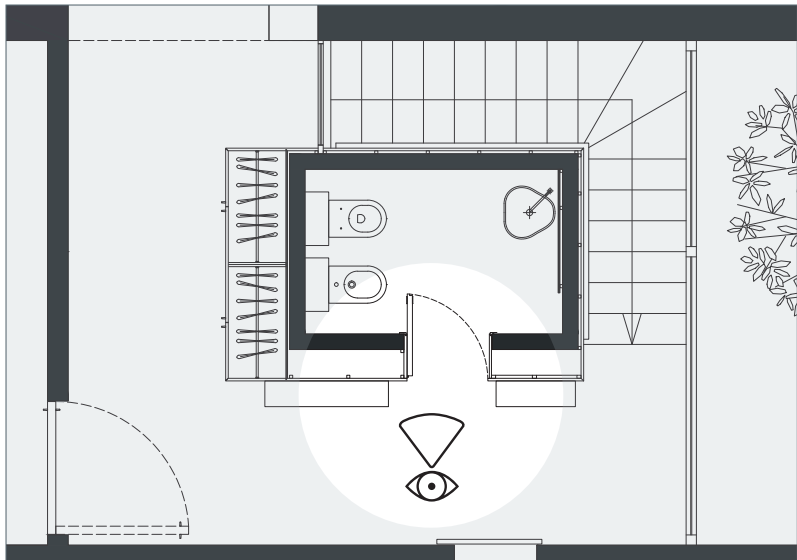




## WAVE CREATES CONTINUITY BETWEEN DOOR AND FURNITURE

Combining the door design with a wardrobe or wooden walls has never been so simple!

**Wave** allows to match the door style with the one of furniture, always preserving maximum ergonomics and closing functionalities of the door.



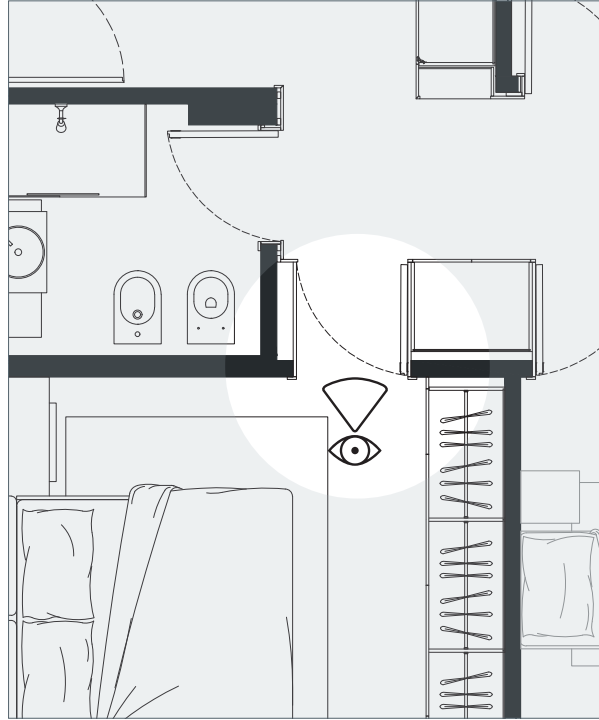


## WAVE OPENS THE DOOR TO NEW DESIGN SOLUTIONS

The interior door is becoming more and more a furniture component rather than just a partition.

With **Wave**, the interior designer can create new design solutions, integrating the door perfectly with the interior design.





## WHEN ROOM IS MISSING, WAVE IS THE SOLUTION

**Wave** is the perfect solution in places where the standard handle could touch the wall or where there is an upholstery in wooden walls, or where the space for movements is reduced.

**Wave** can be easily used even in the space-saving doors where a concealed handle is required.

Negro mate

Puerta corrediza



---

Puerta corrediza con set mariposa



---

Puerta corrediza con función cilindro





## ACCESSORIES FOR SLIDING DOORS

### SCIVOLA TRE CLASS



- Lock with hook and concealed pull out lever
- Bathroom and cylinder versions
- Backset 50

### WAVE

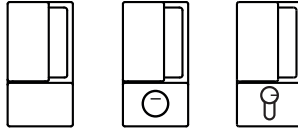


- Passage, privacy and cylinder



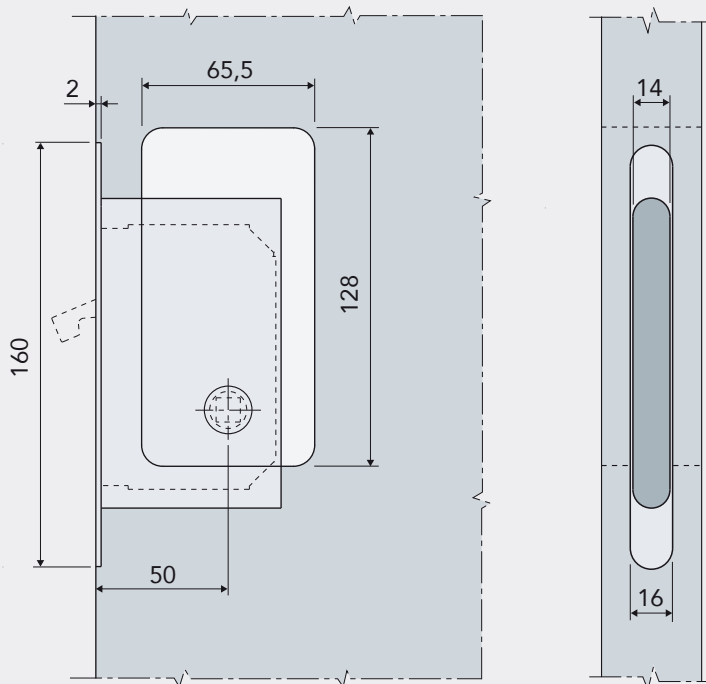
# TECHNICAL DETAILS

Wave dimensions are the same  
for every version:



## MAIN DIMENSIONS FOR SLIDING DOOR

Wave application with lock for sliding doors



# WAVE

reshape the handle





Wave was made entirely in Italy.  
The design, production, processing  
and packaging are carried out  
exclusively on the Italian territory,  
into the AGB plants.

100% MADE IN ITALY

The text "100% MADE IN ITALY" is centered. Below the text, there are two horizontal bars: a green bar on the left and a red bar on the right, representing the colors of the Italian flag.